

MONTHLY MEMBERSHIP PROGRESS REPORT

LOCATION SOUTH CAROLINA

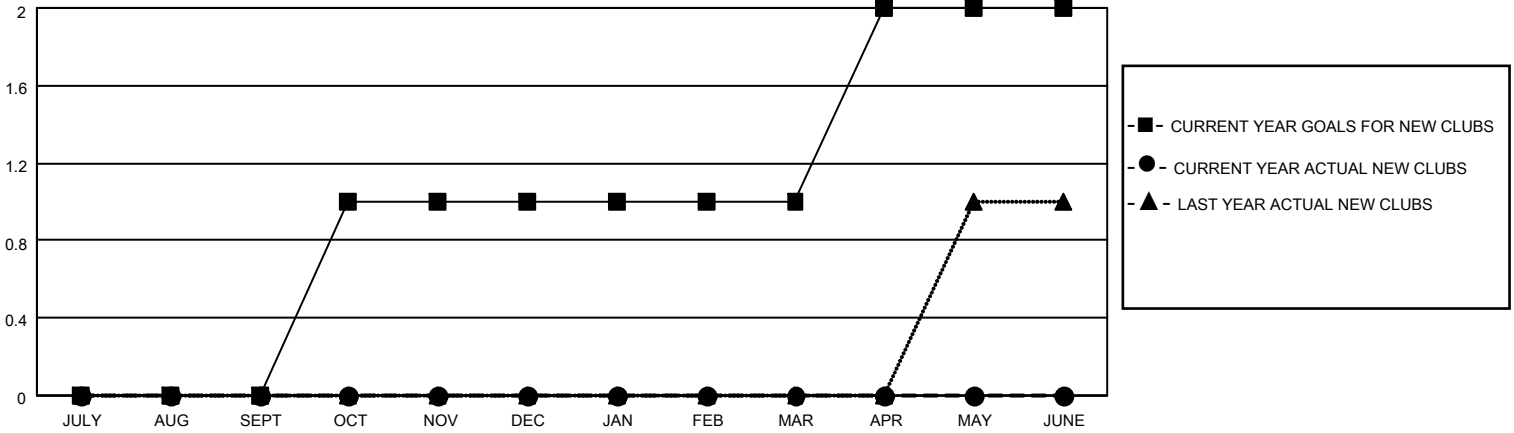
District 32 S

Results as of: 4/30/2023

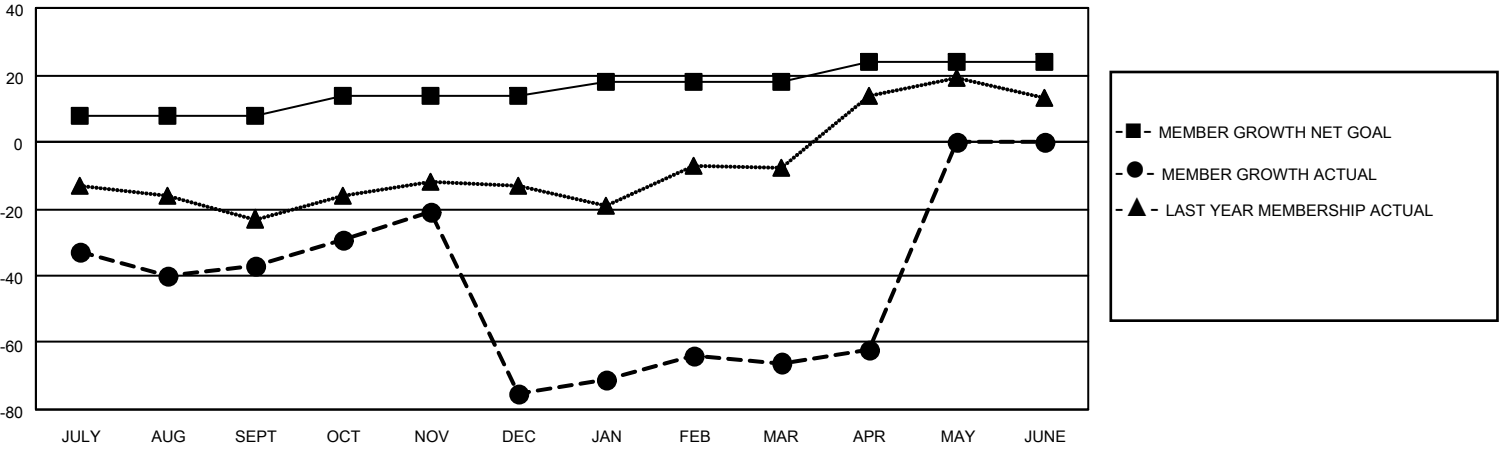
Clubs			
RESULTS FOR 2022-2023			
QUARTER	NEW CLUB GOAL	NEW CLUBS	DROPPED CLUBS
JULY/AUG/SEPT	0	0	1
OCT/NOV/DEC	1	0	1
JAN/FEB/MAR	0	0	0
APR/MAY/JUNE	1	0	0

Members			
RESULTS FOR 2022-2023			
QUARTER	MEMBER GROWTH NET GOAL	MEMBER GROWTH ACTUAL	DROPPED MEMBERS ACTUAL (including transfers)
JULY/AUG/SEPT	8	57	89
OCT/NOV/DEC	6	56	91
JAN/FEB/MAR	4	47	38
APR/MAY/JUNE	6	15	11

GOALS AND ACTUAL NEW CLUBS CUMULATIVE



GOALS AND ACTUAL MEMBERS CUMULATIVE



DROPPED CLUBS: 2

37 CLUBS OF 63 ADDED 1 OR MORE NEW MEMBERS

GENDER DISTRIBUTION

MALE	1,017 (62.16%)
FEMALE	619 (37.84%)
NON BINARY	0 (0.00%)
PREFER NOT TO ANSWER	0 (0.00%)

DROPPED MEMBERS

[CLICK HERE FOR CUMULATIVE MEMBERSHIP DATA](#)

DECEASED	40
CLUB CANCELLED	13
OTHER	176
TOTAL	229

TOTAL FAMILY UNIT MEMBERS	381
FAMILY MEMBERS PAYING HALF DUES	194